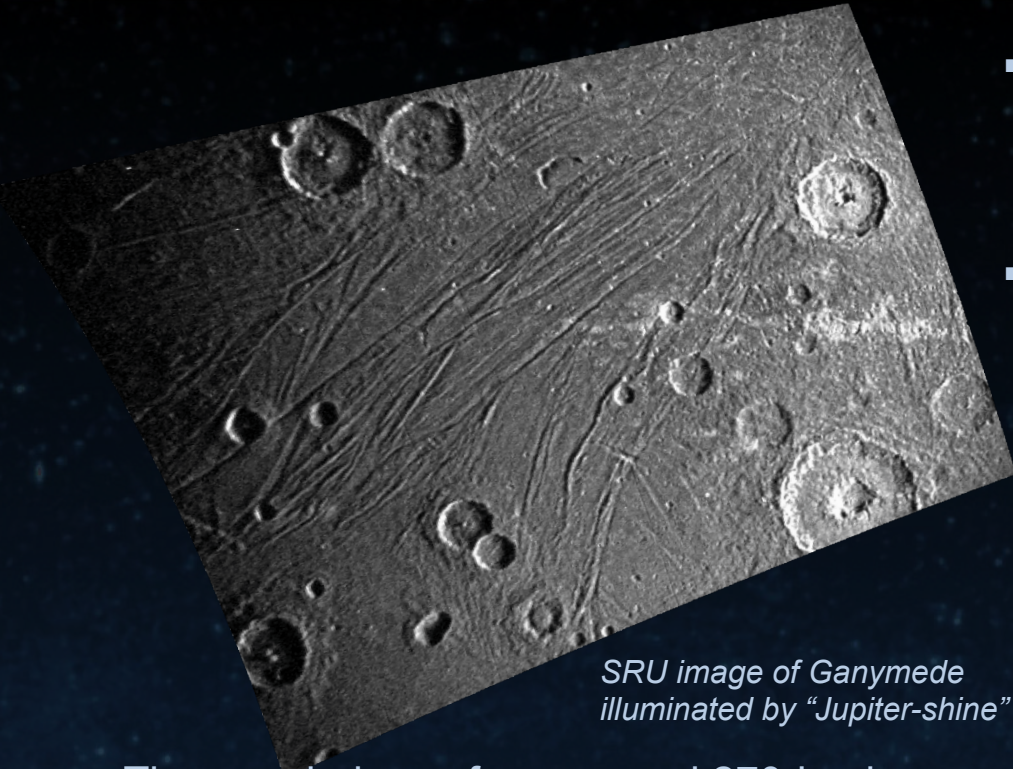


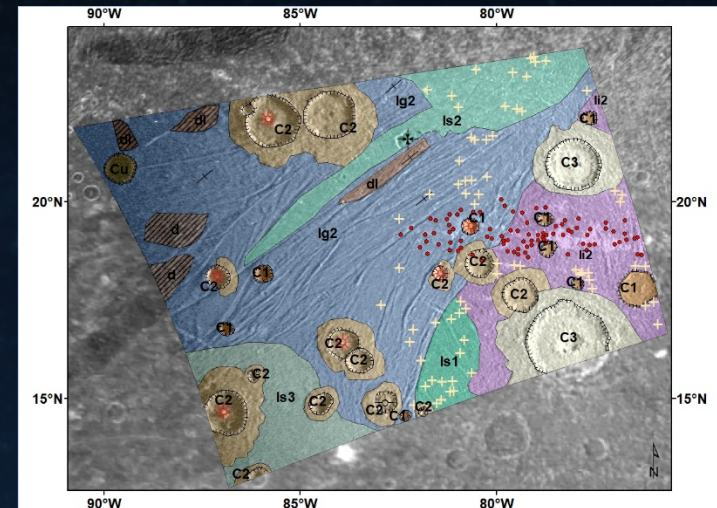
# Juno Reveals Extraordinary Details on Ganymede's Surface



*SRU image of Ganymede illuminated by "Jupiter-shine"*

- Juno's star camera imaged Ganymede's dark side while the surface was illuminated only by scattered sunlight from Jupiter
- The shadowing and contrast in the high resolution image reveals grooved terrain, numerous small craters, and ejecta deposits not visible to Voyager or Galileo

- The morphology of an unusual 270-km long bright feature is resolved
- It may be a scar from the fragments of a broken comet, or a detached ray from a crater over 2000 km away
- The SRU image enables multiple updates to the USGS geologic map of Ganymede



*Updated mapping of Ganymede's Xibalba Sulcus region*